

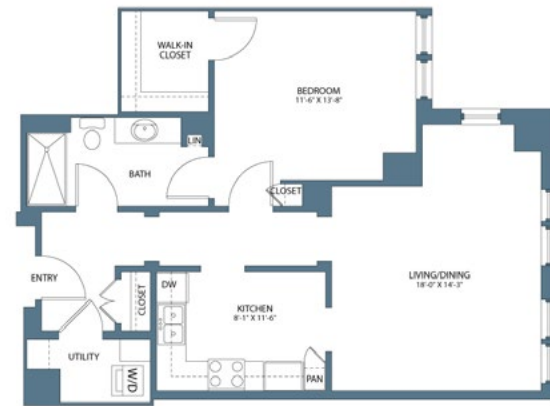


# HARBOR'S EDGE

*Whatever moves you.*

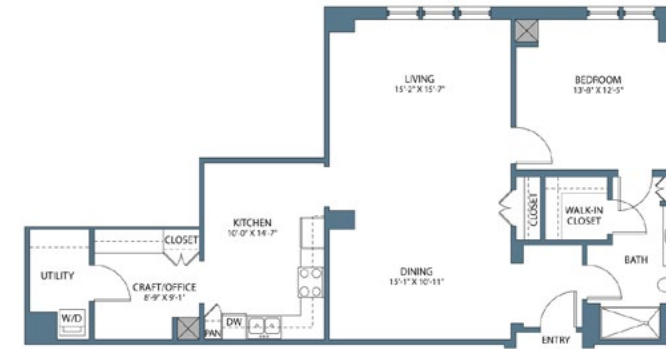
## HARBOR TOWER FLOOR PLANS

One Colley Avenue | Norfolk, VA 23510  
(757) 616-7950 | HarborsEdgeNorfolk.com



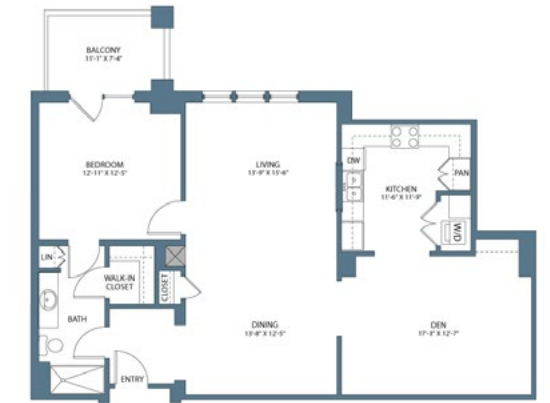
### ONE BEDROOM TRADITIONAL

*1 bedroom, 1 bath  
842 square feet*



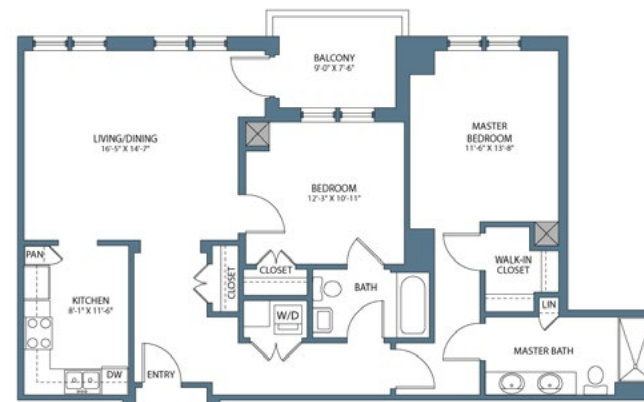
### ONE BEDROOM DELUXE

*1 bedroom, 1 bath with office  
1,110 square feet*



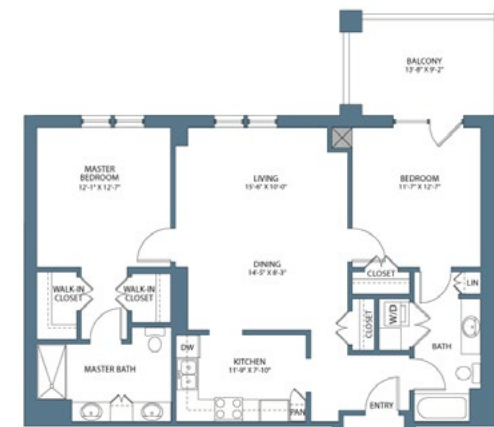
### ONE BEDROOM CLASSIC

*1 bedroom, 1 bath with den  
1,129 square feet*



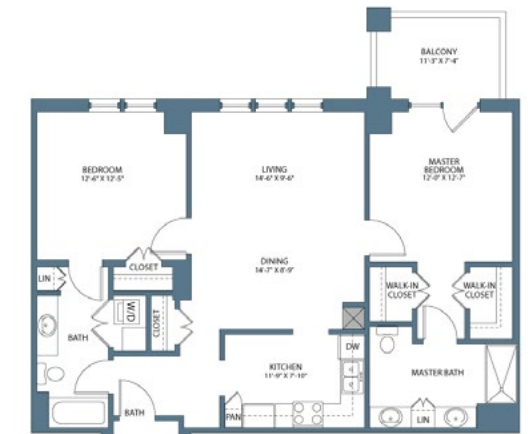
### TWO BEDROOM CUSTOM

*2 bedroom, 2 bath  
1,125 square feet*



### TWO BEDROOM TRADITIONAL

*2 bedroom, 2 bath  
1,100 square feet*



### TWO BEDROOM DELUXE

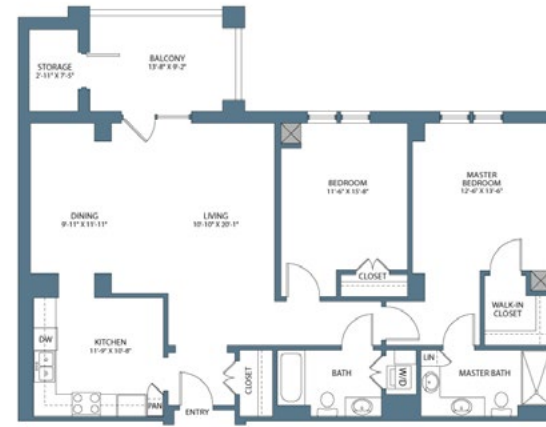
*2 bedroom, 2 bath  
1,099 square feet*

There's a world of things to do just outside of your apartment—from the eclectic scene of Colley Avenue and the charming shops of Ghent, to the incredible array of entertainment, dining and arts opportunities available in Norfolk. Harbor's Edge is also conveniently located directly across the street from Sentara Norfolk General, the region's top hospital.



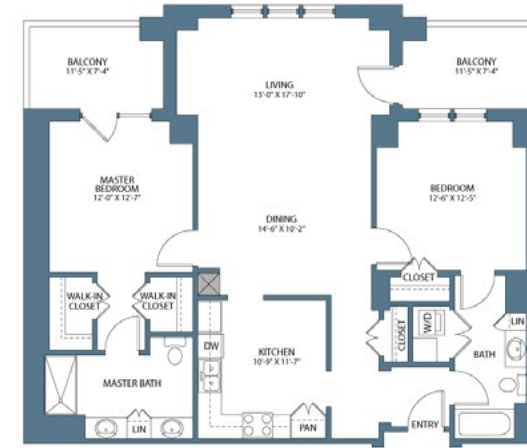
TWO BEDROOM GRAND - SUNROOM

*2 bedroom, 2 bath  
1,459 square feet*



TWO BEDROOM SELECT

*2 bedroom, 2 bath  
1,277 square feet*



TWO BEDROOM CLASSIC

*2 bedroom, 2 bath  
1,272 square feet*



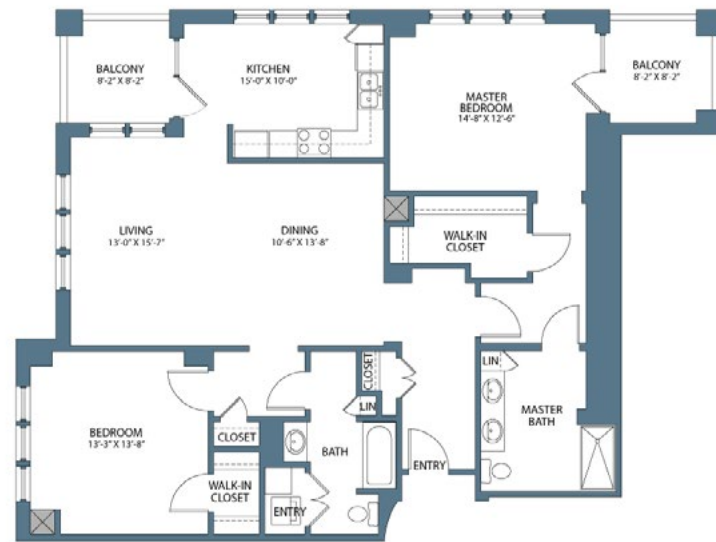
TWO BEDROOM ESTATE - SUNROOM

*2 bedroom, 2 bath  
1,558 square feet*

**HARBOR'S  
EDGE**

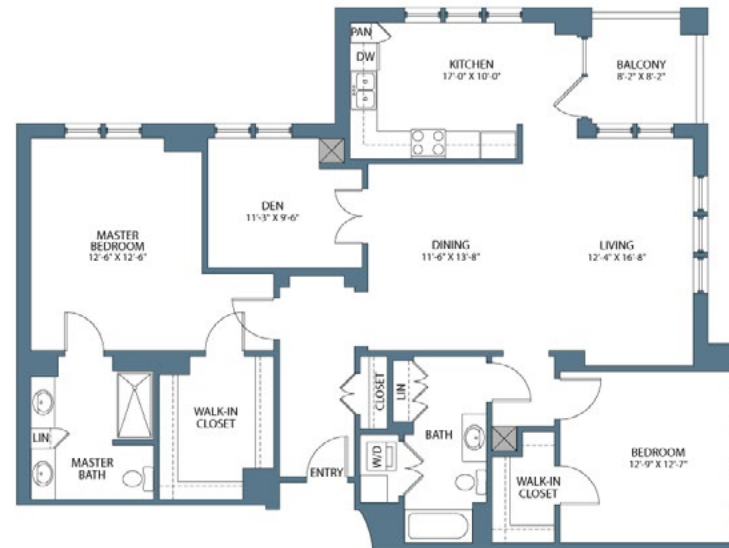


**HARBOR TOWER  
FLOOR PLANS**



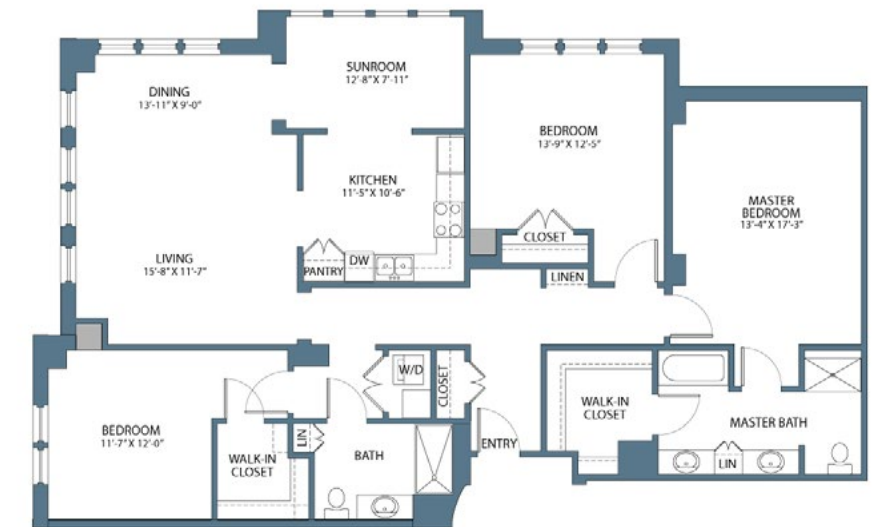
TWO BEDROOM SIGNATURE

*2 bedroom, 2 bath  
1,474 square feet*



TWO BEDROOM ELITE

*2 bedroom, 2 bath with den  
1,617 square feet*



THREE BEDROOM TRADITIONAL

*3 bedroom, 2 bath  
1,822 square feet*