

# THE CENTER FOR MEMORY SUPPORT



## HARBOR'S EDGE

*Whatever moves you.*

When your loved one's memory begins to fade, it can be difficult to imagine—and plan for—the road that lies ahead. Harbor's Edge is here to help you navigate this journey. Our team of dedicated experts gives your loved one physical and mental support in an engaged community, while also providing you with peace of mind.

NOW ACCEPTING DIRECT ADMISSIONS



My wife lives on the memory unit, and it has been a godsend for her and for our family. The staff is calm, attentive and patient. The program has so many activities on the unit and off-unit, which really encourages friendships among the residents.

My wife has had a significant reduction of fear and anxiety, and my own worry and caregiver strain are markedly lessened. I highly respect all dimensions of the Harbor's Edge memory care unit and I recommend it for families in distress.”

Lawrence Bernert, M.D.



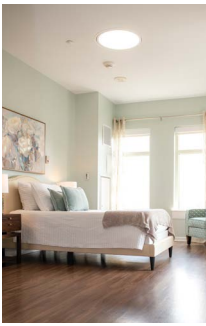
## EXCELLENT CARE AT HARBOR'S EDGE

---

Our staff members are specially trained in Alzheimer's and dementia care, which allows us to offer superior assistance to our memory support residents. We work closely with family members, and together, we create a personalized plan for every resident—one that stimulates mental and physical focus, promotes physical health and encourages socialization.

And while our approach fosters independence, it offers key support services such as health monitoring and medicine administration. Residents can enjoy the resort-style environment of Harbor's Edge, while also benefiting from the safety of a 24-hour supervised and secure environment.

Harbor's Edge offers all inclusive pricing without levels of care changes.



## WELCOMING ACCOMMODATIONS & AMENITIES

---

Our deluxe memory care apartments are comfortable and spacious, and they provide absolute security.

- Private rooms featuring lots of natural light
- Beautiful harbor views
- 3 nutritious, chef-prepared meals daily, plus snacks
- Quaint sunroom and veranda
- On-site beauty salon with nail care and barbershop services available
- Activities programmed to stimulate mind and body, while also encouraging independence and socialization

***Now accepting direct admissions for Memory Support, Assisted Living & Rehabilitation.*** You *do not* have to be a resident or part of our True LifeCare® program to benefit from these services.

# PERSONALIZED CARE MEMORY LOSS

---

- On-site medical services—Led by a medical director and specialists associated with Mid-Atlantic Long-Term Care
- Professional and licensed 24-hour team members—RNs, LPNs, RMAs and CNAs specially trained in caring for those with memory loss
- Emergency response system
- Medication management
- iN2L computer engagement
- Access to rehabilitative services (speech, occupational and physical therapy)
- Personalized nutrition planning
- Assistance with Activities of Daily Living (ADLs)

# CREATING CONNECTIONS

---

We are also one of the only communities in the region to offer access to iN2L technology, a computer-based program that can stimulate, entertain and help our residents engage with other community members.





---

## CONTACT US

**757.616.7999 | 757.861.4965**  
assistedlivingHE@harboredgenorfolk.com

**HarborsEdgeNorfolk.com**  
One Colley Avenue | Norfolk, VA 23510



Fort Norfolk Retirement Community, Inc.,  
d/b/a Harbor's Edge a Not-for-Profit Corporation